

**Wi-Fi**  
**Door/Window Sensor**  
**USER GUIDE**

## Meet Your Sensor

This smart Wi-Fi door and window sensor monitors the state of itself, when the door/window is opened or closed, battery is in low voltage or the case is removed from the base, alarm notification will be sent to your phone, viewing the state of the sensor on your APP, so you'll know that someone is coming in or out your home.

## Features

- Working in 2.4G Wi-Fi network.
- Support Easy or AP mode for Wi-Fi connection.
- Send notification about sensor state, battery level or tampered event.
- Open/Close history record.

## Specifications

Power Supply:	DC 3V (LR03 AAA Battery x2)
Standby Current:	<2uA
Alarm Current:	<100mA
Wi-Fi Frequency:	2.4GHz
Wi-Fi:	IEEE802.11b/g/n
Low Battery Alarm:	2.4V

## What You Need

To set up and use door sensor, you'll need an iPhone or Android phone, the Smart App, a Wi-Fi 802.11 b/g/n(2.4GHz) network connection.

## In The Box



### **Door/Window Sensor**

Senses when a door or window is opened.



### **Extra Adhesive Mounting Strips**

For door/window installation



### **User Guide**

## At a Glance



Top view

### LED Indicator

Lights up when door/window is opened. And blinks in case of low battery, please replace the battery soon.

### Open-close magnet

Works with sensor to sense when a door or window is opened or closed.

### Setting Button

Using for Wi-Fi connection

### Tamper switch

Once the sensor is removed, an alarm notification will be sent to your mobile.

### Power on/off

Push it to left ON to power up the sensor.



Bottom view

### Battery receptacle

Contains 2xAAA battery 3V



Inside view



### Mounting strips

Attaches sensor and magnet to a flat surface.

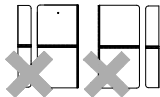
## Where to Place Door/Window Sensor



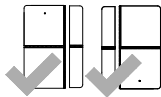
On the door



On the window



INCORRECT



CORRECT



The magnet should be aligned with the middle of sensor and placed within 0.79 inches (2.0 cm) of sensor when the door or window is closed, as shown in the image left.

0.79 inches (2.0cm) max

## Indicator

What You See	What It Means
LED Light is on for 2 seconds (blinking in case of low battery)	Door is opened
	Door is closed
	Tamper alarm
LED light rapidly blinks continuously	SmartLink configuration
LED light slowly blinks continuously	Soft AP configuration
LED light is on for 10 seconds	Connection to internet is successful.

## APP

### Download App

Scan the QR code or search “Smart Life” from GooglePlay/APP Store via a smart phone to download and install the application.



Smart Life

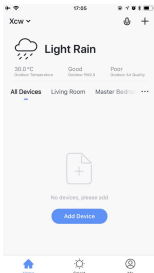
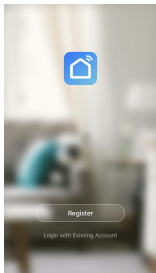
## Log In/Out

1. If you have not registered an account yet, please tap **"Register"** on the app and follow the instructions to create your account first.
2. If you do not receive an account verification code in your email box during the registration process, please remember to check your spam/junk folder.
3. Once you have an account with us, please enter your email address or phone number and password to log in.

## Adding Device

### Wi-Fi Network Configuration

1. Run "Smart Life" APP.
2. Register and login.

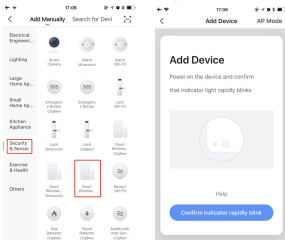


# SmartLink Configuration

## (Easy Mode)

Connecting your sensor to Wi-Fi network via **SmartLink** mode:

1. Open the Smart Life APP, tap **"Add Device"** button on your smartphone.
2. Choose **"Security & Sensor"** from **"Add Manually"** column on the left, then tap **Door/Window Sensor** icon .
3. Power on the device. Press and hold the setting button until the LED indicator rapidly blinks. The device is in easy mode.
4. Tap **"Confirm indicator rapidly blink"**, choose the local Wi-Fi and enter the password, tap **"Confirm to start configuration"**.
5. This configuration process should take about 15 seconds.
6. You'll find your device on home page when the network is connected.
7. Pick the device, now you can get the sensor state.

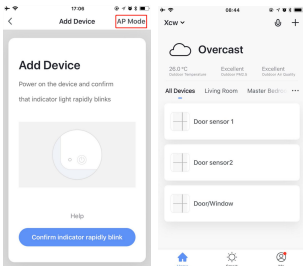




## Soft AP configuration


Please change to “**Soft AP mode**” if the configuration fails in “SmartLink” mode.

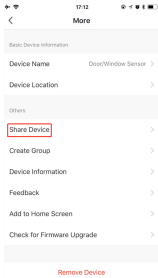
1. Press and hold the setting button again until the LED indicator blinks slowly. The device is in AP mode.
2. Tap “AP Mode” on the upper right , then tap “**Confirm indicator slowly blink**”
3. Choose the local 2.4G Wi-Fi and enter the password. Tap “**Confirm**”, choose Wi-Fi hot spot named “**SmartLife-xxx**” then go back to Smart Life APP.
4. You'll find your device on home page when the network is connected.
5. Pick the device, now you can get the sensor state.

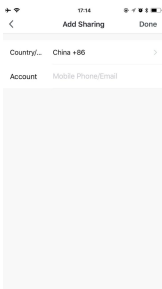
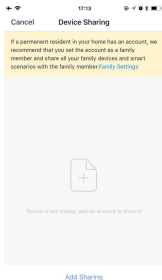


## Sharing Device

Sharing your device to your family.

1. Choose the device you want to share on Home page, tap  on the upper corner.
2. Choose "**Share Device**" to add an account (Mobile phone/Email) to share it.





## Notifications

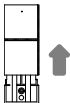
What Happens	Which Notification You Get
Door/Window Open	The door/window is opened.
Door/Window Close	The door/window is closed.
Sensor Case Removed	The sensor is removed from its base.
Battery Level Dipped Below 2.4v	The battery is low, replace the battery soon.

## How to replace the battery

You should replace the battery soon when you open or close your door/window with the indicator of sensor blinks rapidly.

*Note:* the sensor uses two AAA batteries (LR03), which can be purchased at your local retailer.

Please gently slide the sensor up and remove it, then put the new battery in the receptacle.



After the battery has been replaced, please put the sensor over the bottom cover and gently slide down to install it.

